

DEPARTMENT OF CROPS PRODUCTION
NATIONAL CENTER FOR PLANT TESTING

THE DUS SYSTEM IN VIETNAM

Msc. Nguyen Thi Mai Ha & staf.



INTRODUCTION OF NATIONAL CENTER FOR PLANT TESTING

- National Centre for Variety Evaluation and Seed Certification established in 1980
- It's belong to the Department of Agriculture (now: Department of Crops Production) in December 2004.
- Change to National Center for Plant and Fertilizer Testing in Feb,2007
- Then National Center for Plant Testing in Jun,2012.



ORGANIZATION STRUCTURE OF THE CENTER (NCPT)



HUMAN RESOURCE

Total: 103 Persons:

- 03 Ph.D
- 33 Msc
- 42 Bachelors
- The others are technical workers.

FACILITIES

- 2400m² for working rooms
- 28 ha for experimental
- 3 Seed Testing Labs (Ha Noi, Quang Ngai, Ho Chi Minh)



Van Lam Station



Tu Liem Station



Ba Ria Station

FUNCTIONS AND TASKS

- To conduct of
test for Value
Culture and Use
(VCU)



FUNCTIONS AND TASKS

- To Implement the DUS test for new plant varieties



FUNCTIONS AND TASKS

Field inspection



FUNCTIONS AND TASKS

Seed testing



FUNCTIONS AND TASKS

Post control for seed quality



FUNCTIONS AND TASKS

Gap-Inspection



FUNCTIONS AND TASKS

Training

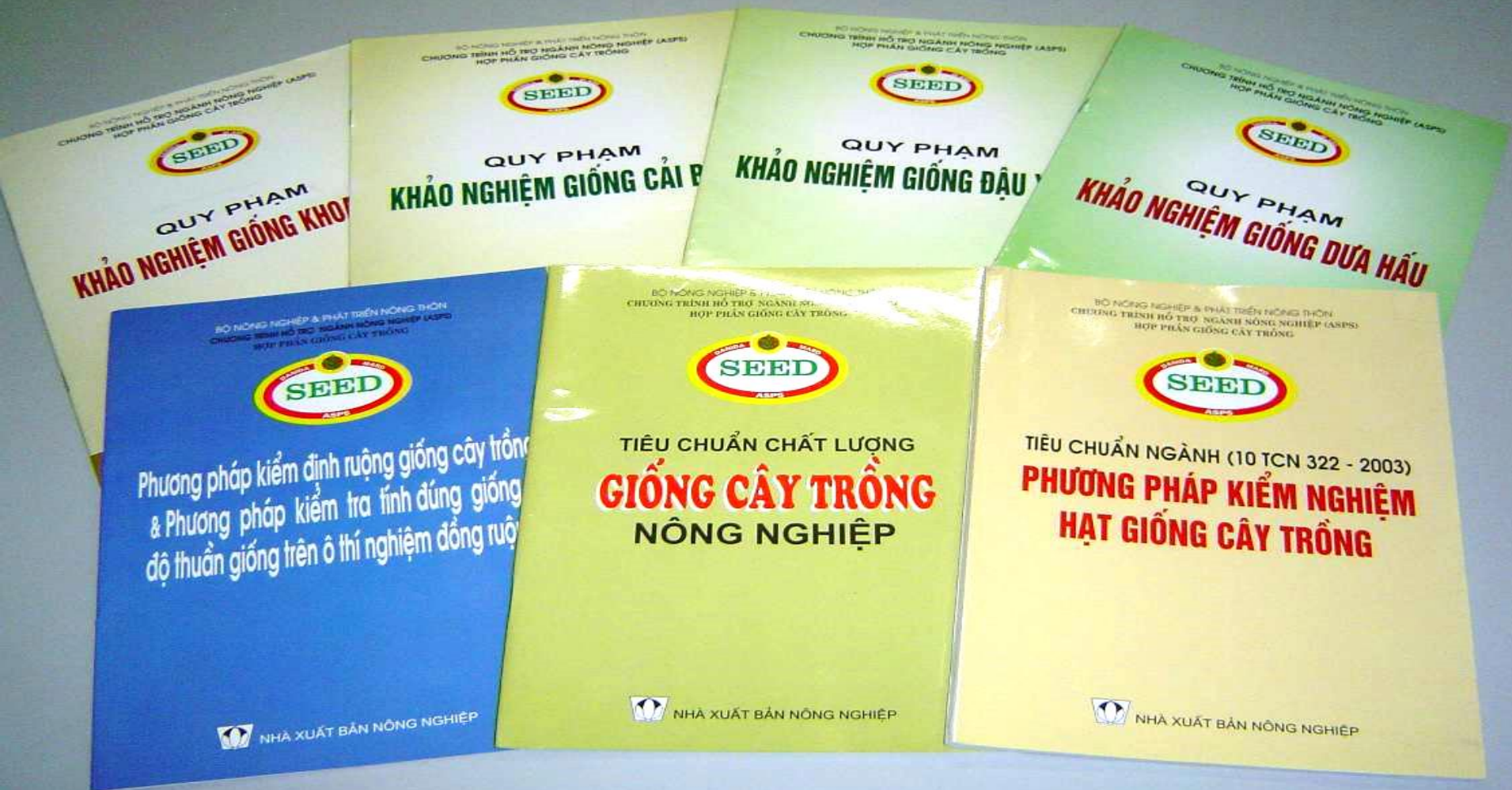


International cooperation



FUNCTIONS AND TASKS

Draft the Seed Guidelines in general



PURPOSE OF DUS TESTING

Determine Distinctness

Determine Stability

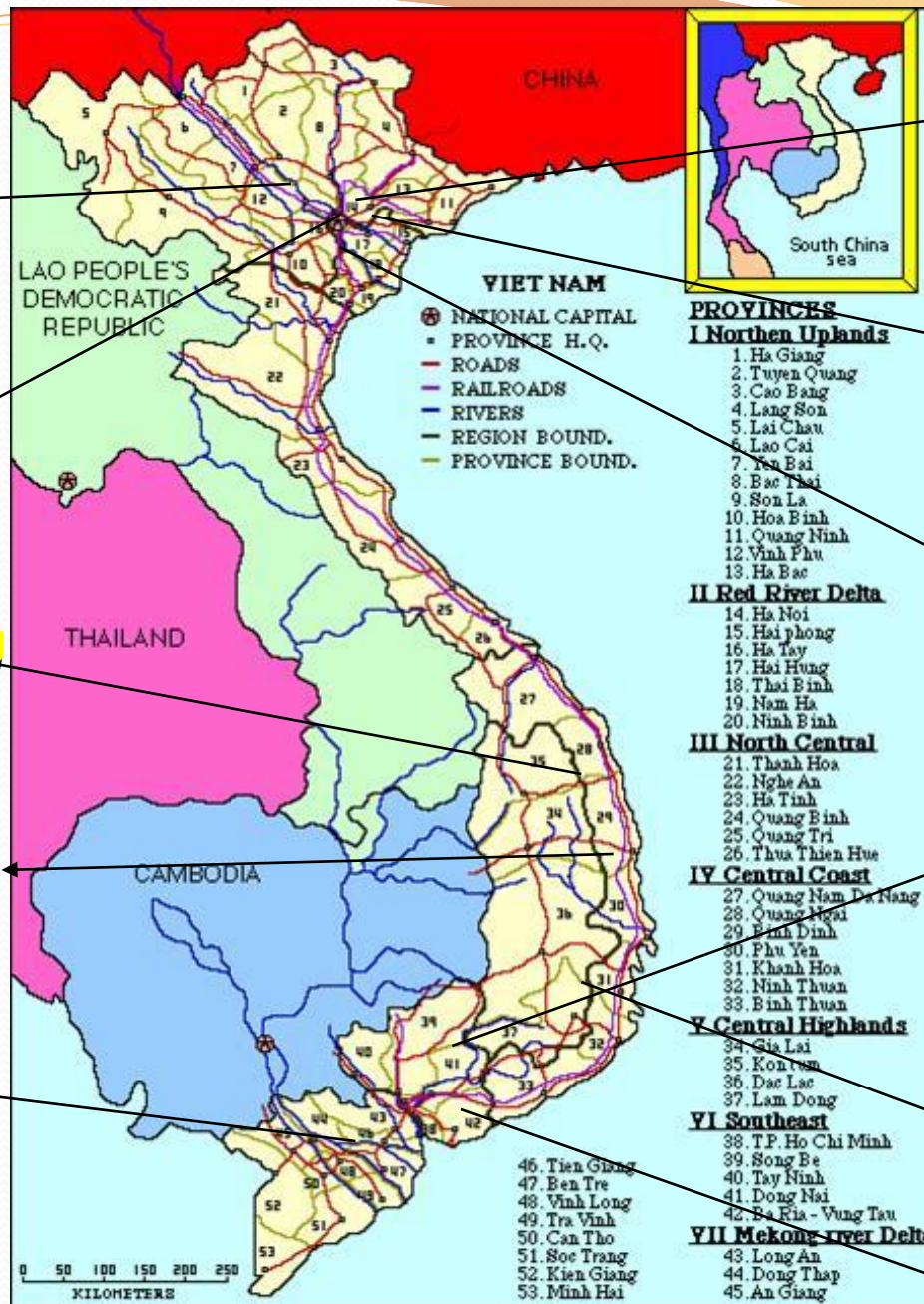
Determine Uniformity

-
- ```
graph TD; A([Determine Distinctness]) --- B([Determine Stability]); B --- C([Determine Uniformity]); B --- D[]; D --> E["- To protect new plant variety
- To protect plant breeders' Rights"]; style D width:0px,height:0px; style E fill:#90EE90,stroke:#333,stroke-width:1px;
```
- To protect new plant variety
  - To protect plant breeders' Rights

# **ESTABLISHING THE DUS TEST SYSTEM IN VIET NAM**

- In 2001: To Prepare for DUS Test Agent**
- In 2002: MARD assigned NCPT**
- In 2005: DUS testing for some crops is conducted**





NOMAFSI

Van Lam Station

Center for Plant Testing of central region

The Western Highlands Agricultural Forestry Science Institute

Southern Fruit Research Institute

Fruit and vegetable Research Ins.

Plant resources center

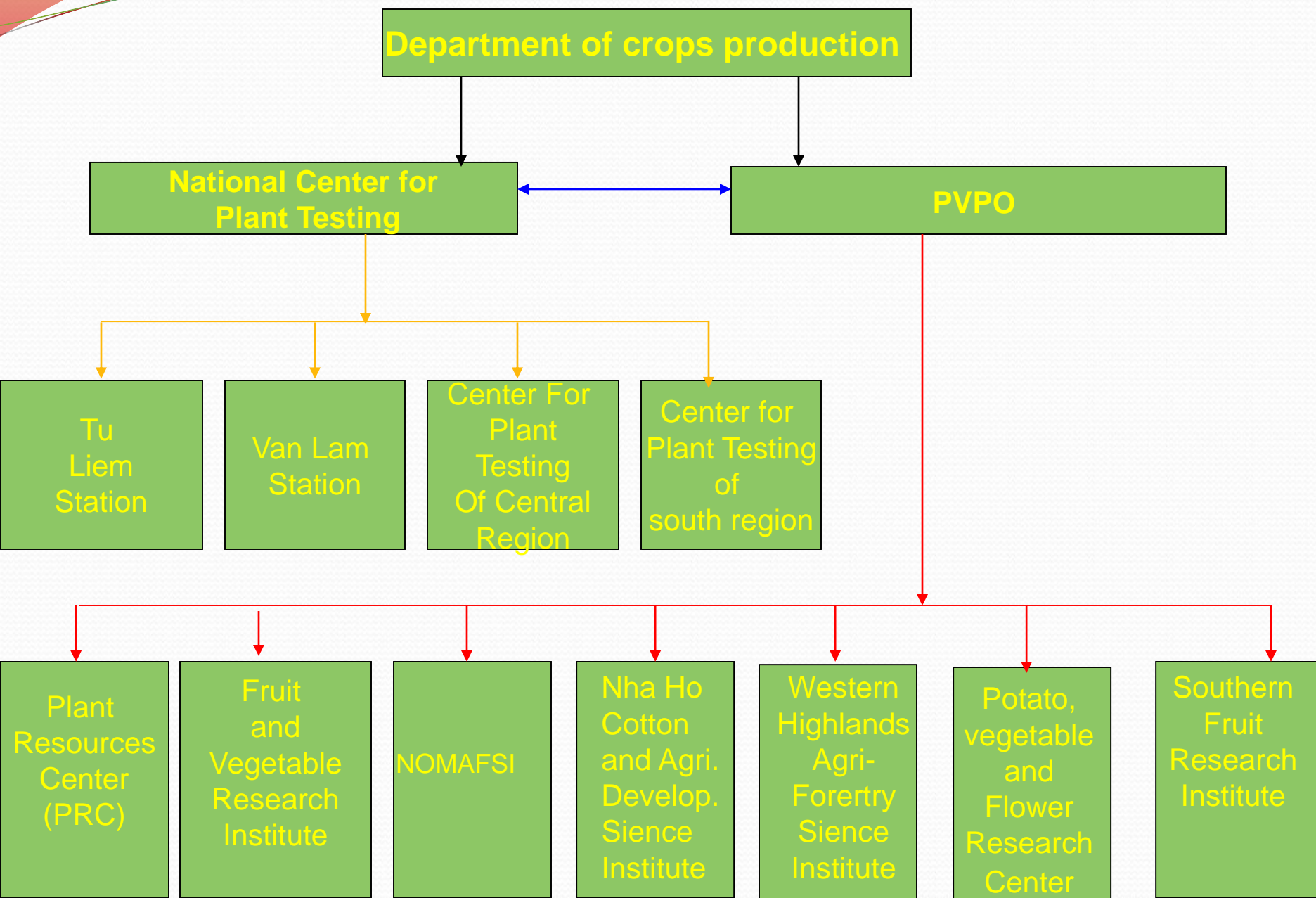
Tu Liem Station

Potato, Vegetable and Flower Research Center

Nha Ho Cotton and Agri. Development Institute

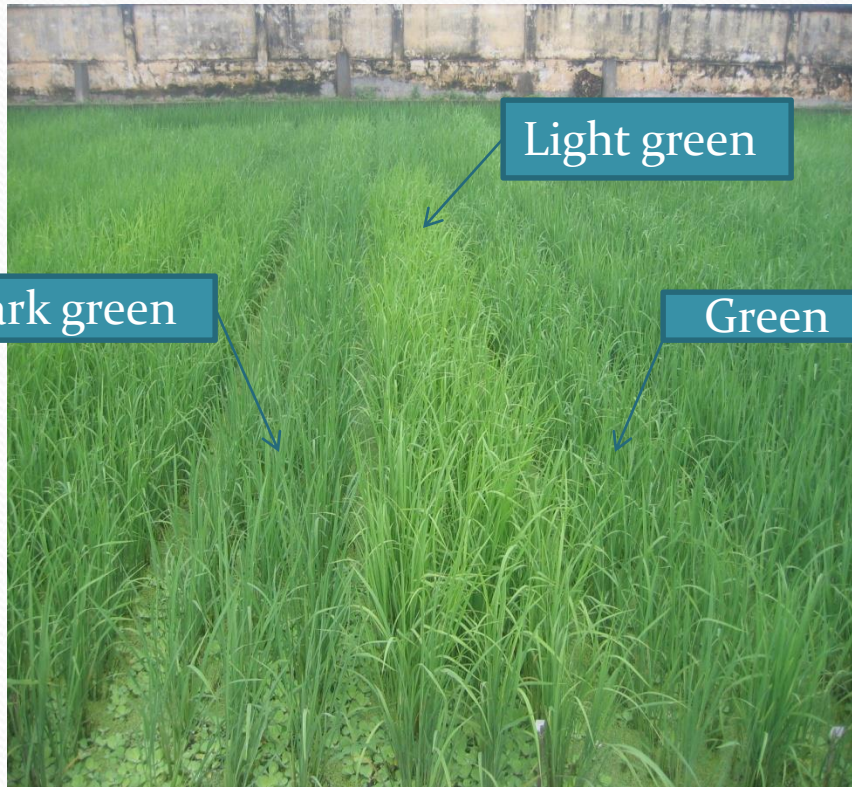
Ba Ria Station

# DUS Test and Plant Variety Protection Organization



# Van Lam Station

To Conduct the DUS test  
of Rice



To Conduct the DUS test  
of cabbage



# Van Lam Station

To Conduct the DUS test of  
cucumber



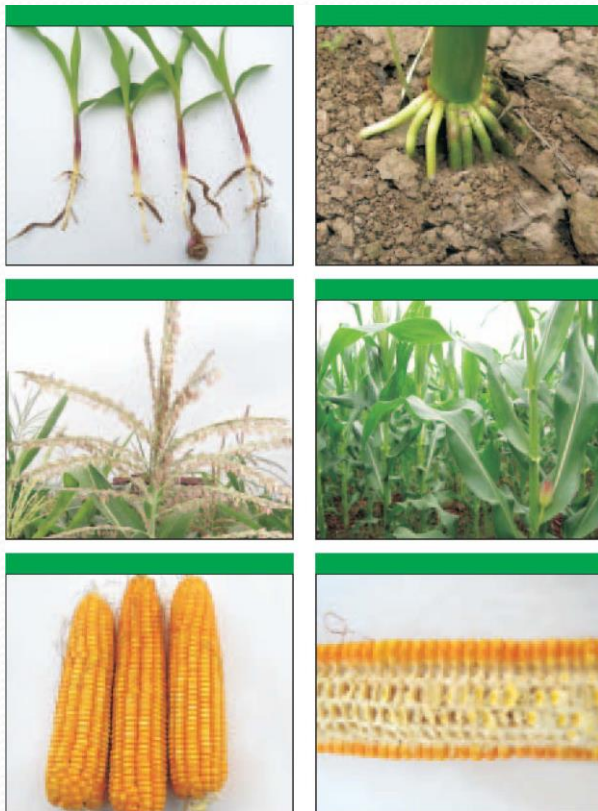
To Conduct the DUS test  
of kohlrabi



# Tu Liem Station

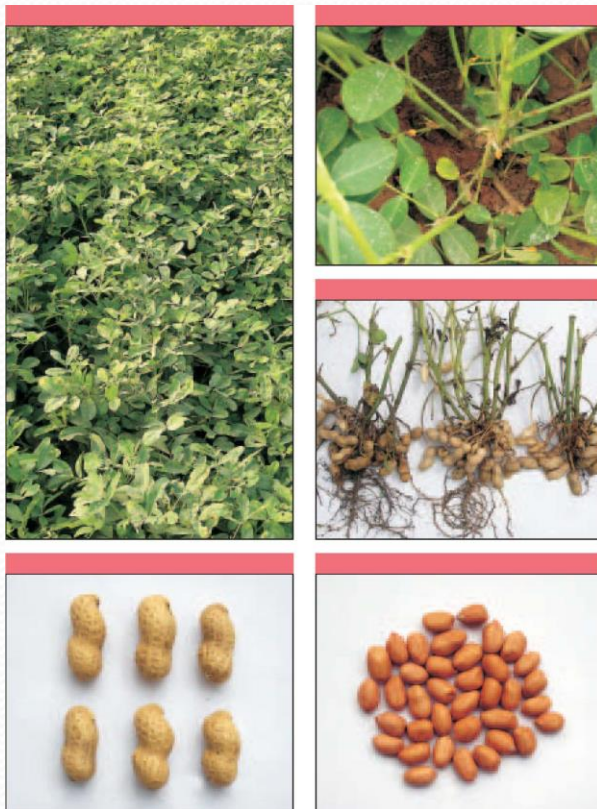
To Conduct the DUS test of corn

To Conduct the DUS test of soybean



# Tu Liem Station

To Conduct the DUS test  
of groundnut

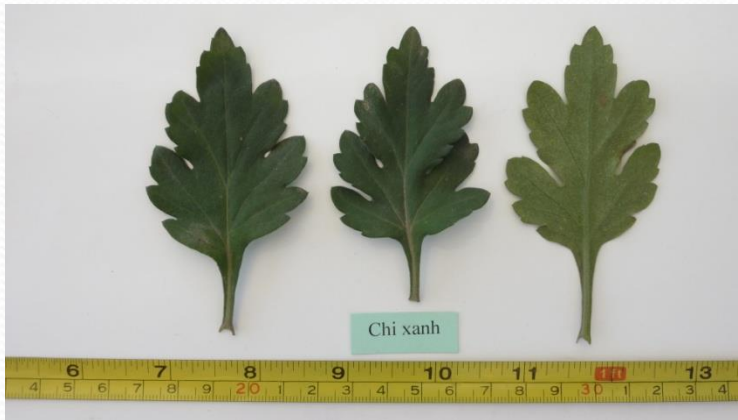


To Conduct the DUS test  
of tomato



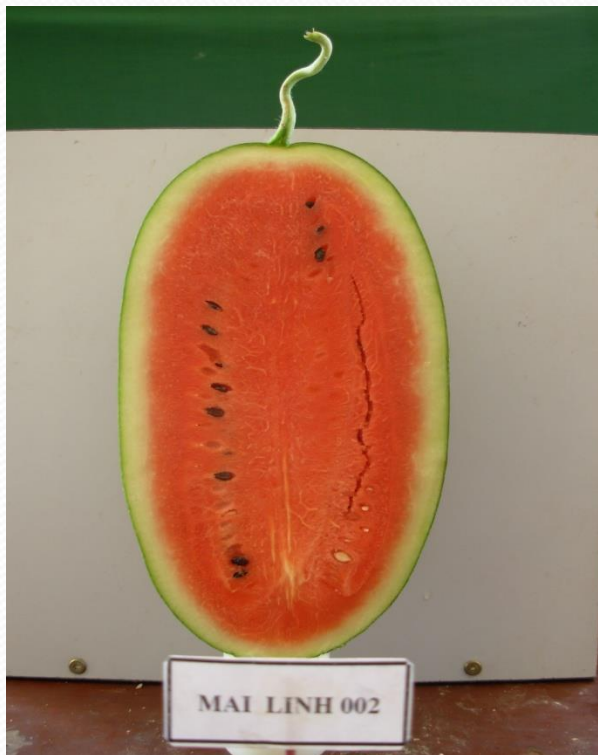
# Tu Liem Station

To conduct the DUS test of chrysanthemum



# Center for Plant Testing of Central Region

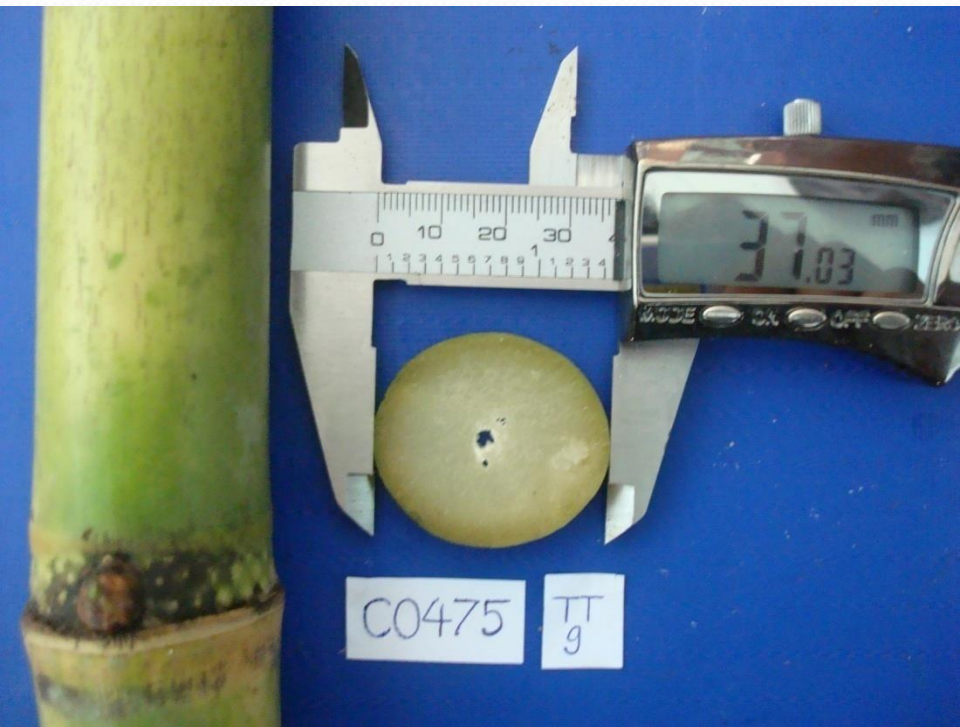
To Conduct the DUS test of  
Watermelon





# Center for Plant Testing of Central Region

To Conduct the DUS test of Sugar cane



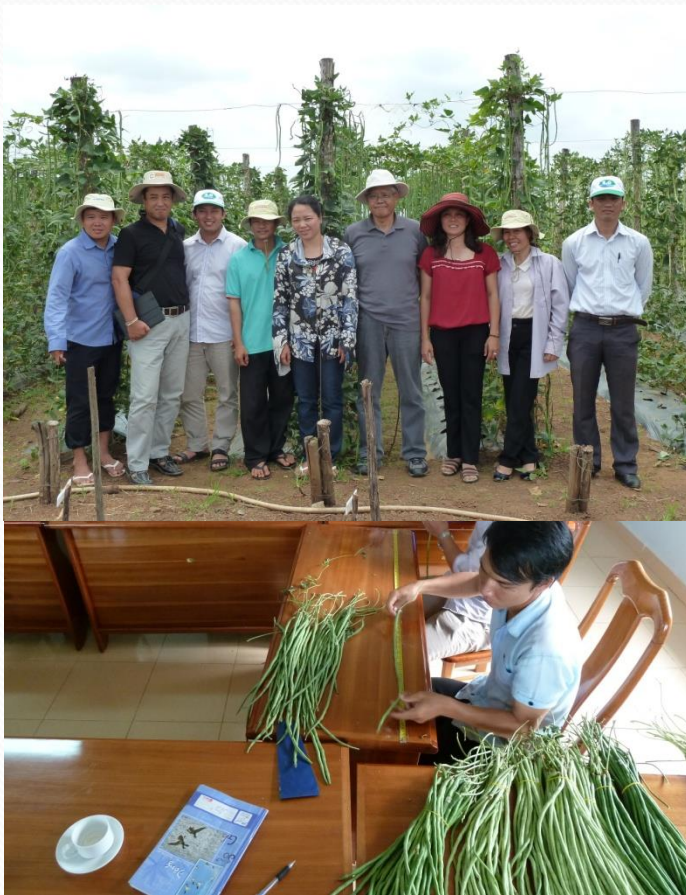
# Southern East Station

To Conduct the DUS test  
of Rice in the south,  
Papaya and bitter gourd



# Southern East Station

To Conduct the DUS test  
of long bean



To Conduct the DUS test  
of chilly



# Nha Ho Cotton and Agricultural Develop Science Institute

To Conduct the DUS test  
of cotton

To Conduct the DUS test  
of grape



# Fruit and Vegetable Research Institute

To Conduct the DUS test of gerbera



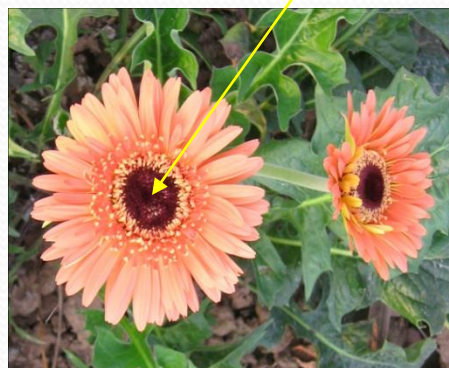
To Conduct the DUS test of carrot



Flower disc: dark coloration

Absent

Present



# Nothern moutain Agricultural Forestry Science Institute

To Conduct the DUS test of tea



# Potato, Vegetable and Flower Research Institute

To Conduct the DUS test  
of potato



To Conduct the DUS test  
of rose



# Plant Resources Center

To Conduct the DUS test of cucurbita and ginger







**Western Highlands Agri-Forestry  
Science Institute**

To Conduct the DUS test of coffee

To Conduct the DUS test of rubber

# **Southern Fruit research Institute**

To Conduct the DUS test of mandarin

To Conduct the DUS test of orange

# Number of Varieties Conduct to test for DUS

| Plant         | 2008 | 2009 | 2010 | 2011 | 2012 |
|---------------|------|------|------|------|------|
| Rice          | 58   | 44   | 64   | 97   | 111  |
| Chrysanthemum | 0    | 4    | 1    | 4    | 6    |
| Tomato        | 0    | 1    | 1    | 0    | 1    |
| Cucumber      | 0    | 0    | 4    | 0    | 4    |
| Kohlrabi      | 0    | 0    | 0    | 2    | 2    |
| Corn          | 26   | 35   | 38   | 35   | 47   |
| Soybean       | 5    | 2    | 0    | 2    | 6    |
| Groundnut     | 6    | 0    | 0    | 3    | 5    |
| Watermelon    | 2    | 0    | 0    | 0    | 0    |
| Potato        | 0    | 1    | 1    | 2    | 0    |
| Bitter gourd  | 0    | 3    | 4    | 0    | 0    |



**THANKS YOU FOR YOUR ATTENTION!**