


PRESENTATION 2:

Protection of New Varieties of Rice in Malaysia



Presented by Mr. Sulaiman Bin Hashim
Deputy Director
Crop Quality Control Division
Department of Agriculture, Malaysia

23 November 2015

Titi Serong Agricultural Center, Perak. Malaysia

CONTENT

1. Status of Plant Variety Protection in Malaysia
2. Protected Varieties in Malaysia
3. Challenges during Rice Examination



1.
Status of Plant Variety Protection
in Malaysia



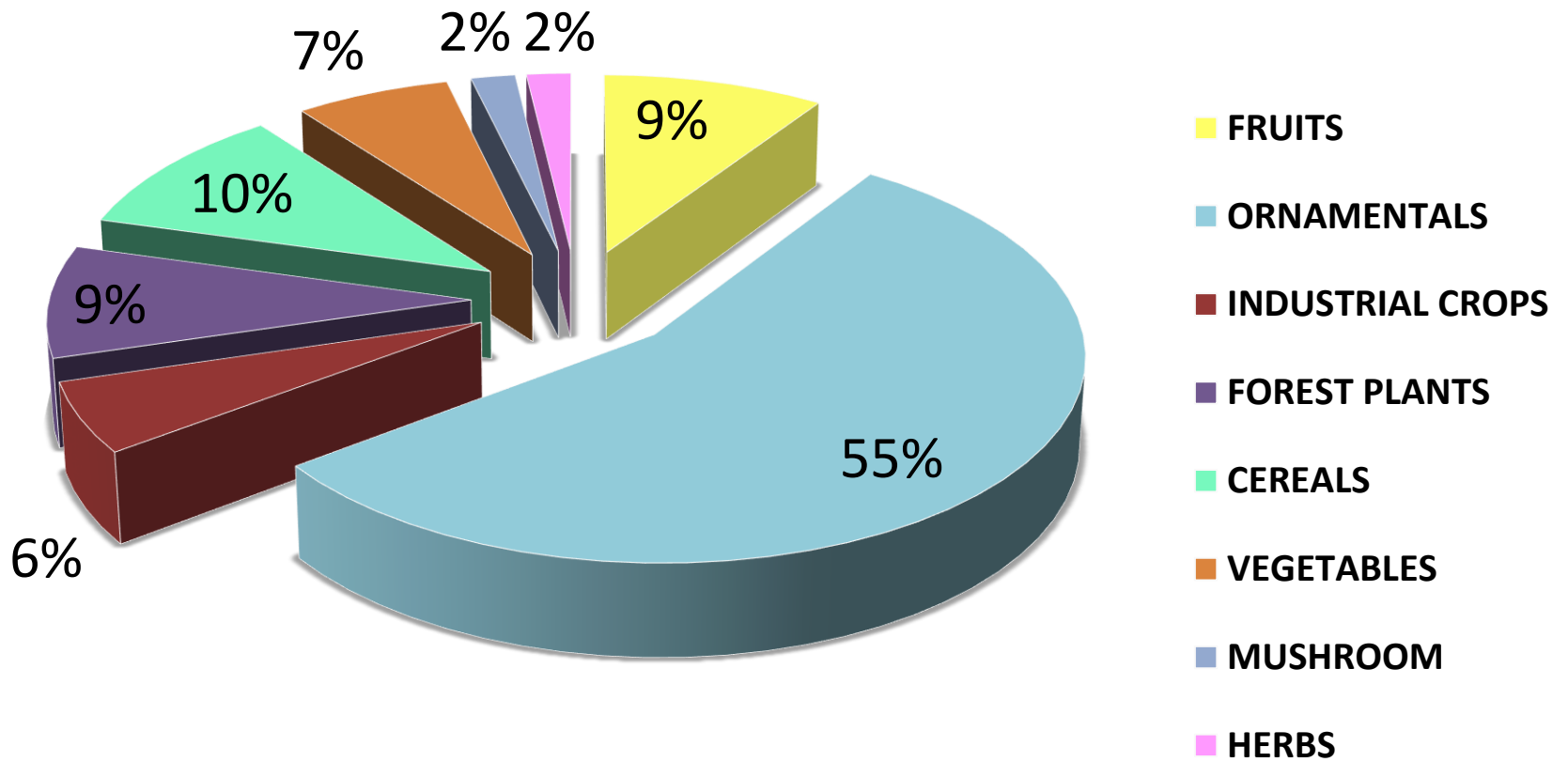
PVP Applications Received 2015

No.	Crop	Number of Applications	Applicant
1.	Chrysanthemum	19	Dekker Breeding B.V.
			Deliflor Royalties B.V.
			Van Zanten BV
			Seikoen Co. Ltd.
2.	Rice	2	Malaysia Nuclear Agency
3.	Sweet Potato	3	Vegefruit Resources Sdn Bhd
4.	Pineapple	1	MARDI
5.	Coconut	1	MARDI
6.	Cucurma	1	INDIVIDU
7.	Banana	1	Taiwan R&D Institute
TOTAL		28	

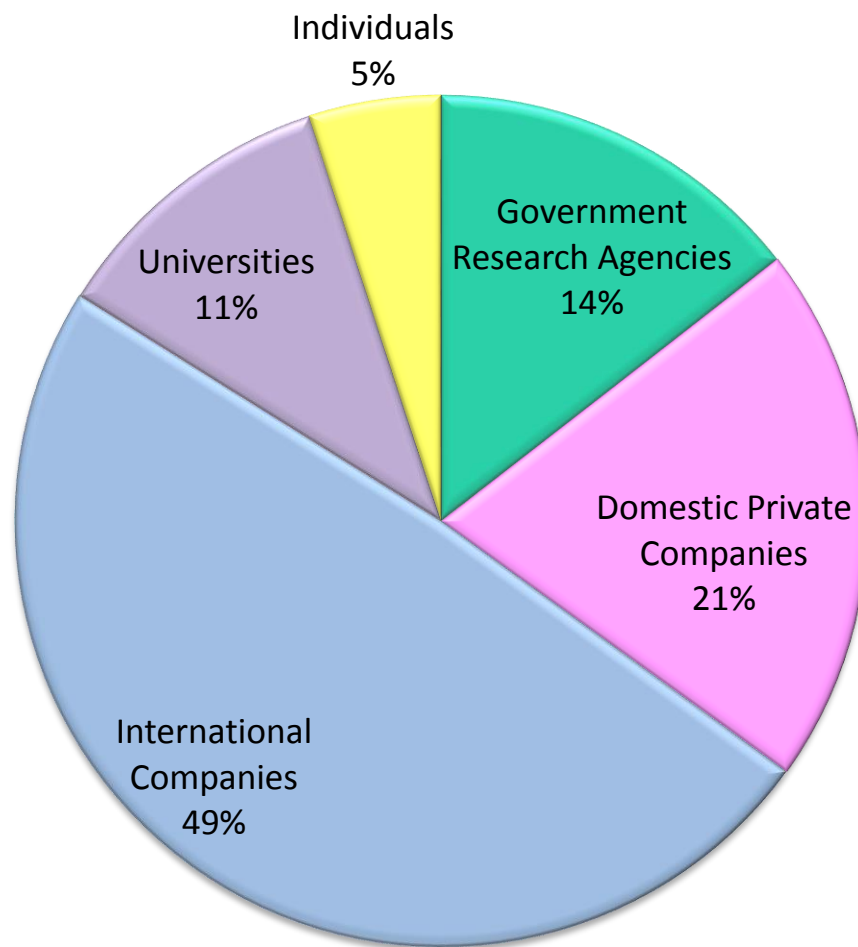
**Number of Applications Received
2008 – 2015
(by Crop Type)**

Crop Type	Total Applications
Fruit	20
Ornamentals	118
Industrial Crop	12
Forest Plantation Sp.	19
Rice	22
Vegetables	14
Mushroom	4
Herbs	4
TOTAL	213

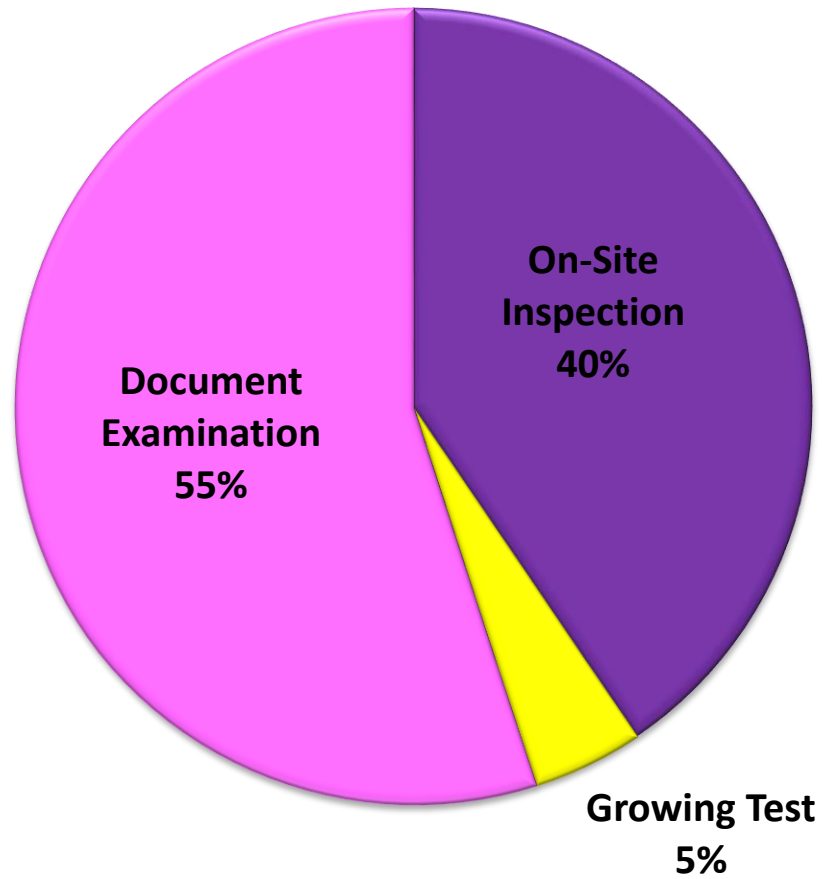
Number of Applications (by Crop Type) (2008 – 2015)



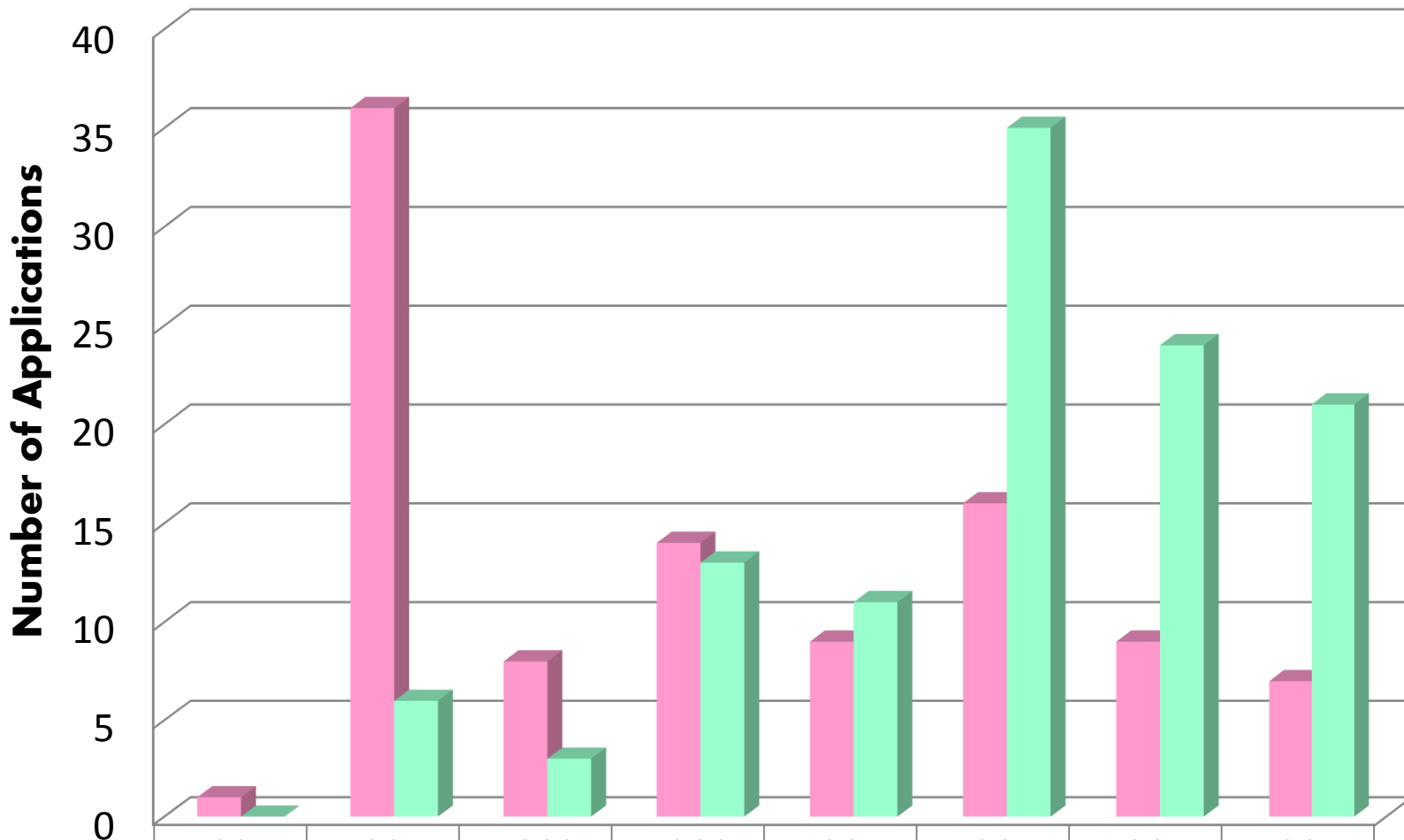
PVP APPLICATIONS by APPLICANT CATEGORIES (2008- Nov 2015)



Type of Substantive Examination for PVP Applications 2008-2015



Number of PVP Applications by Nationality 2008- Nov 2015



LOCAL	1	36	8	14	9	16	9	7
FOREIGN	0	6	3	13	11	35	24	21

2.

**PROTECTED RICE VARIETIES
IN MALAYSIA**

Protected Varieties

YEAR of GRANTING	NUMBER OF TITLES
2012	25
2014	14
2015	17
2016 (Expected)	72

6
Rice
varieties

7
Rice
Varieties

PROTECTED RICE VARIETIES

1. Padi 'UKMRC-2' (PVBT 032/09)
2. Padi 'UKMRC-3' (PVBT 033/09)
3. Padi 'UKMRC-4' (PVBT 034/09)
4. Padi 'UKMRC-8' (PVBT 038/09)
5. Padi 'UKMRC-9' (PVBT 039/09)
6. Padi 'UKMRC-10' (PVBT 040/09)

2012 : Success in DUS Testing

**2014 : Granted with Plant
Breeder's Right**

7. Padi 'MR220 CL1' (PVBT 012/11)
8. Padi 'MR220 CL2' (PVBT 013/11)
9. Padi 'MR253' (PVBT 024/11)
10. Padi 'MR263' (PVBT 025/11)
11. Padi 'MR272' (PVBT 026/11)
12. Padi 'MR269' (PVBT 019/12)
13. Padi 'MR276' (PVBT 007/12)

2013: Success in DUS Testing

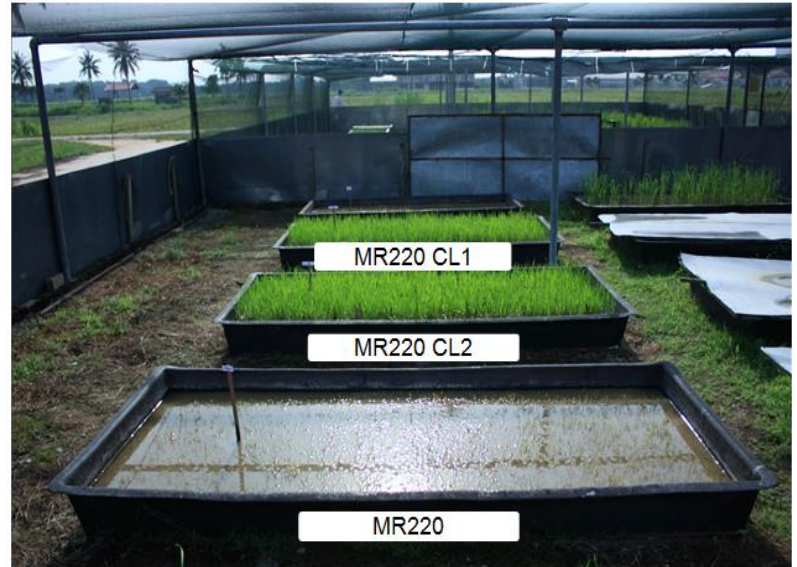
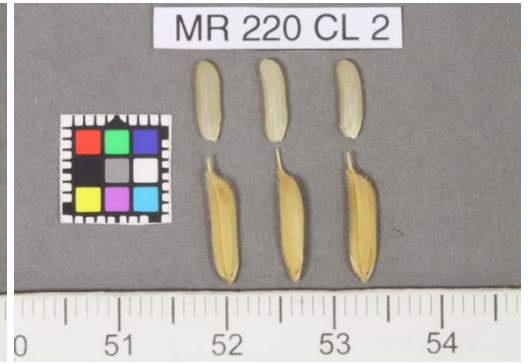
**2016: Expected to receive Grant of
Plant Breeder's Right**

Claimed Characteristics

VARIETIES	CHARACTERISTICS
UKMRC-2	Yield 6.47 ton/ha; 19.11 tillers per plant; resistant to blast
UKMRC-3	Yield 6.21 ton/ha; grain 29.63g; grain cream; moderately resistant to blast
UKMRC-4	Yield 6.06 ton/ha; grain weight 26.30g; resistant to blast
UKMRC-8	grain weight 26.88g; maturity 119 days; moderately resistant to blast
UKMRC-9	Yield 5.20 ton/ha; grain weight 26.2 g; grain colour red; resistant to blast
UKMRC-10	Yield 4.56 ton/ha ; culm habit erect; grain colour red; moderately resistance to blast



VARIETIES	CHARACTERISTICS
MR220 CL1	Early maturity 97-113 days; Resistant to herbicide Imidazolinone
MR220 CL2	Late maturity 113-122 days Resistant to herbicide Imidazolinone
MR269	Early maturity 104-109 days; culm height taller 83-90cm; grain slightly broader 10.00-10.41mm; panicle length slightly shorter 24.0-26.0 cm; panicle exertion slightly longer 3.6-9.5cm
MR276	Culm semi erect; culm height taller 75-77.5cm; panicle lenth longer 25.5-27.5cm; grain length 9.00-10.6mm, width 1.7-1.9mm; amilose 22.9%
MR253	Culm habit erect; shorter stem; longer & broader grain; shorter panicle, higher amilose content
MR263	Culm semi erect; maturity 102-112 days; culm height higher 69-79cm; panicle length 25-29cm; 12-20 tillers/plantlate senescence; amilose 19.97%
MR272	Maturity slightly later; resistant for neck rot disease; better yield



Keadaan anak pokok pada hari semburan

Keadaan anak pokok selepas 14 hari



3. CHALLENGES IN RICE TESTING

1. LIMITED RICE EXAMINERS

- Mr. Hj. Mohd. Nasir Bin Warris (promoted 2014)
- Mr. Misrudin Bin Hadis (retired 2015)





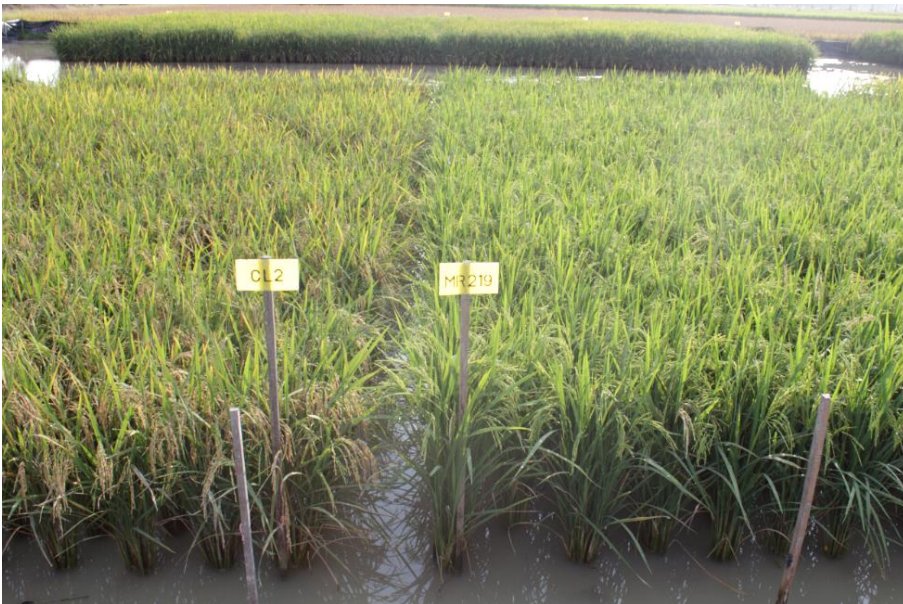
- Ms. Nurlee (2013-present)
- Ms. Raudah Talib (2013-present)
- Mr. Roma Ahmaja (2013- present)
- Ms. Umi Jainab (2013-present)



2. External test plot sometimes not able to fulfilled DUS requirement.



3. Observation may not be able to be observed at all times as examiners are working in other district.



4. Limited transports for Examiners



5. Limited varieties to use as similar varieties.



6. Climate and pest control.





TERIMA KASIH