

Korea Seed & Variety Service Gyeongnam Provincial Office



2015. 2.5.



I

General Informations

II

Main Missions



I . General Informations

- Location, History, Missions,
Organization

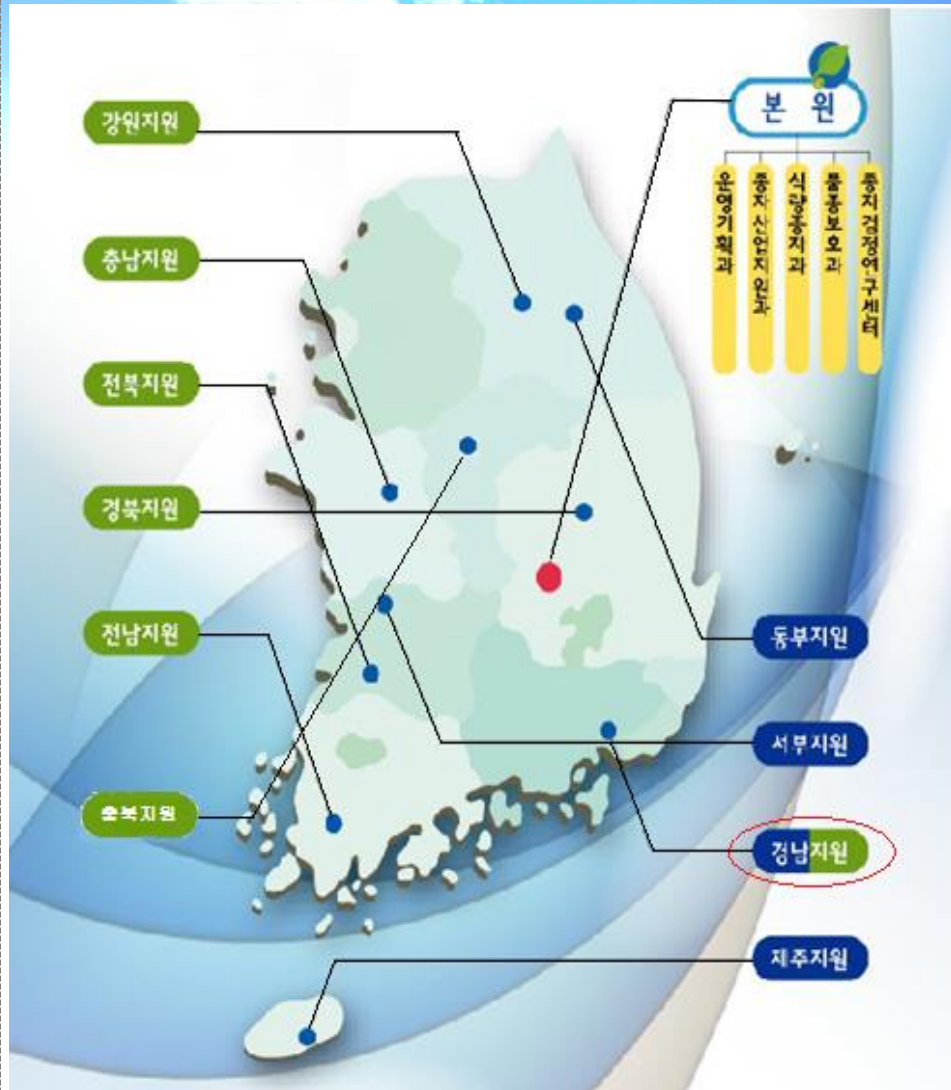


I - 1. Location

총 정원 : 207명 ['15. 1. 현재]

- Headquarters
(4 Divisions, 1 Center)
 - Administration & Planning
 - Seed Business Assistance
 - Cereal Crop Seed Production
 - Plant Variety Protection
 - Seed Testing & Research Center


- Provincial Offices (10)
 - Certified Seed (6)
 - Growing Trials (3)
 - Cereal Crop Seed + Growing Test (1)



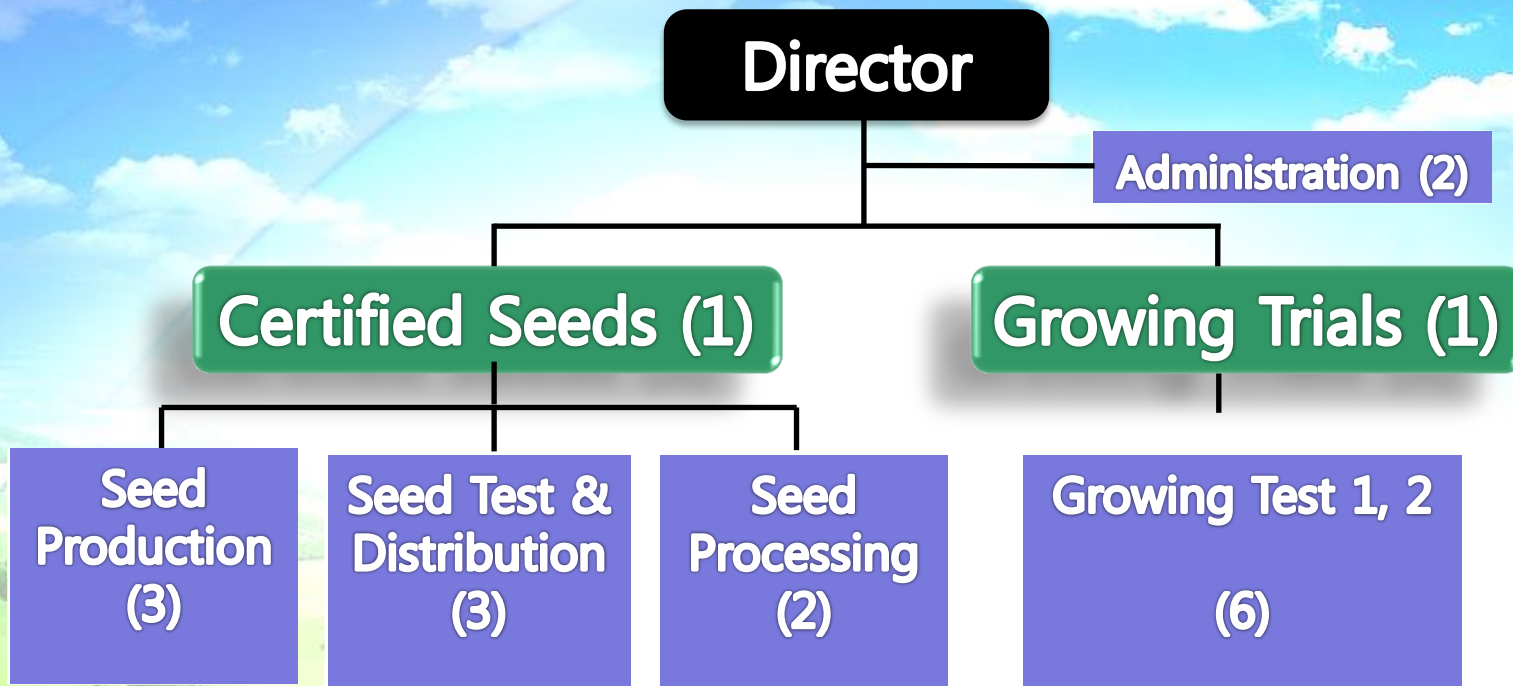
I - 2. History

- ◆ 1974. 11. Established National Seed Management Office (NSMO, former of KSVS)
 - Production and Distribution of Nationally Certified Seeds
- ◆ 1977. 10. Established **Miryang Branch Office**
- ◆ 1999. 03. Add PVP mission
 - '97. 12. Effect Seed Industry Law
- ◆ 2000. 11. Open Growing Trial Office
- ◆ 2007. 11. Renamed **Gyeongnam Prov. Office**, KSVS

I - 3. Missions

- 
- Certified Seed Production & Distribution of main cereal crops
 - Growing Trials for New Plant Variety Protection, National List
 - Regional Seed Market Management
 - Regional Private Plant Breeders Support

I - 4. Organization and Staffs



Total 19 Staffs



Ⅱ . Introduction of Main Missions

- Growing Trials
- Certified Seed Production, Processing, Distribution



II- 1. Growing Trials

◆ Total area : 5ha (49,107m²)

◆ Cropping area : 3.3ha

◆ Facilities

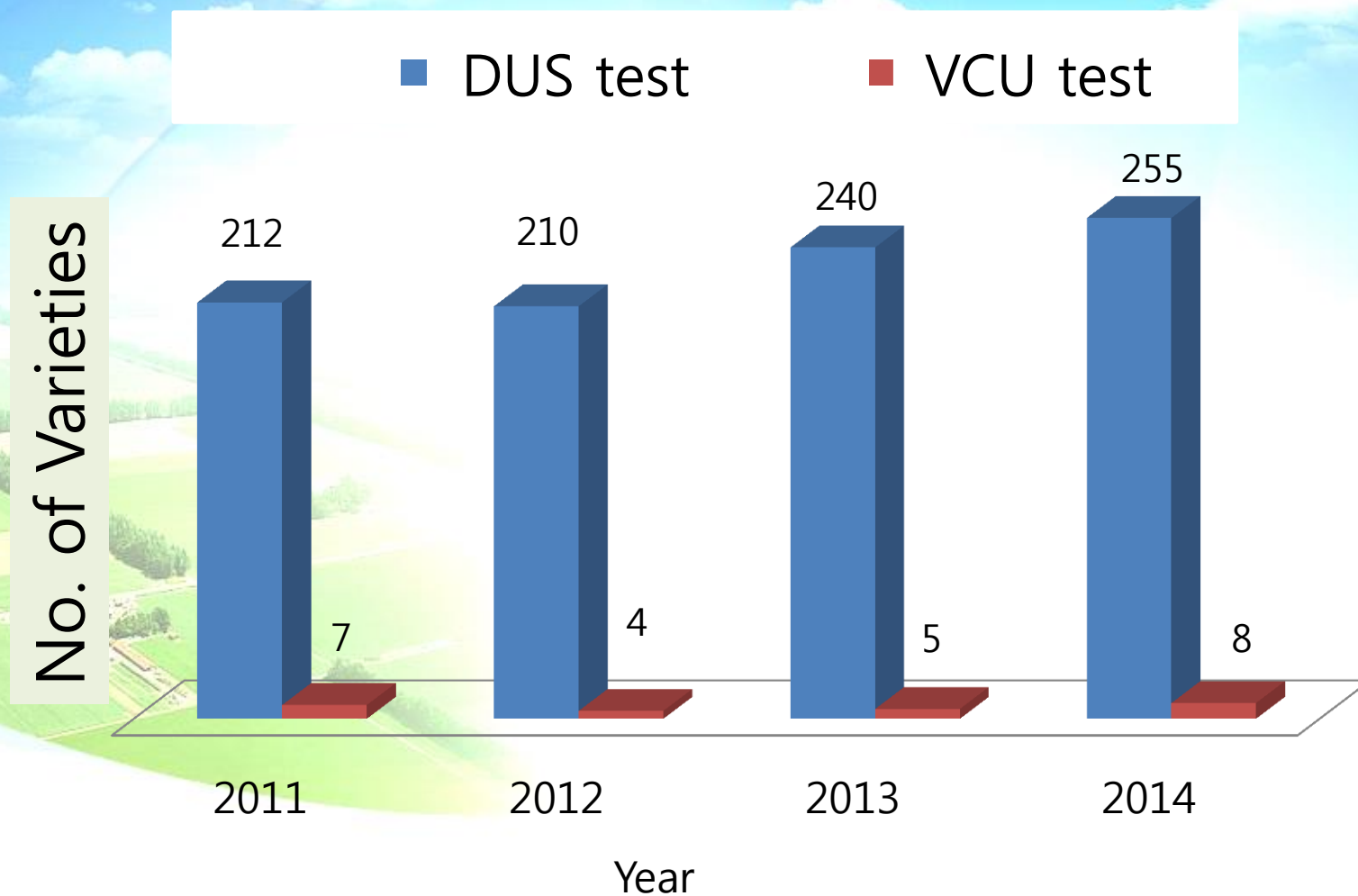
- Field(Paddy, Upland)
- Glass house (7)
- Vinyl tunnel (3)
- Ware house (2)



Plants for DUS in Gyeongnam

Food & industrial crops	Vegetables	Ornamentals
Barley, Wheat, Rye, Oats, Triticale, Soybean, Beans, Corn, Sorghum, Job's tears, Common millet, Foxtail millet, Perilla, Cape jasmine, <i>Liriope graminifolia</i> , etc.	Peppers, Spinach, Onions, Welsh onion, Chinese chive, etc.	Orchids (Dendrobium, Cymbidium, Oncidium Phalaenopsis, Calanthe, Cattleya, Neofinetia, Aerides), Kaffir lily, Clematis, Dracaena, Cactus, Succulents, Carnation, Hydrangea, A nthurium, Camellia, Poinsettia, Lotus, Indian rubber tree, etc.

Varieties for Growing Trial



VCU Test for National List

❖ VCU : Value for Cultivation and Use

Crops

– Rice, Barley, Soybean, Corn, Potato

II- 2. Certified Seeds

■ Merits

- Higher Purity
- Higher germination rate
- Higher Yields

■ Cereal crops

- Rice, Barley, Wheat, Soybean

■ Cover areas

- Gyeongnam, Busan, Ulsan

Certified Seed Production Procedure

- 
- Plan seed production
 - Contract with qualified farmers group
 - Purchase harvested seed only passed inspection
 - Process seed for high quality
 - Advertise sellable amounts, and receive demand
 - Deliver to farmers



Seed Processing Procedure



Certified Seed Production Amount (2014)

Gyeongnam

Plant	Cultivar	Amount(ton)
Rice	10	2,683
Barley	3	120
Soybean	2	52
Wheat	2	55

Miryang Baegjungnori Folk Performance





KOREA SEED & VARIETY SERVICE GYEONGNAM PROVINCIAL OFFICE

Thanks for your visit !